



DIGITAL SANBORN MAPS, 1867–1970™

NO MAPS ARE CONSULTED MORE in academic and public libraries than Sanborn® fire insurance maps—the detailed property and land-use records that depict the grid of everyday life in more than 12,000 U.S. towns and cities across a century of change. Now they're as close as your keyboard with the Digital Sanborn Maps™—ideal for genealogists, historians, architects, urban planners, and countless others.



PROQUEST GENEALOGY CENTER



PROQUEST®

A LIVING SNAPSHOT OF HISTORY

The Sanborn Maps® were originally compiled to help insurers assess the value of property, identify risk factors, and underwrite losses. And they're just as essential to researchers today, according to the Library of Congress:

"Because cities were mapped several times, the maps enable researchers to trace the architectural history of individual buildings or entire communities. Social historians have used them for analyzing everything from the commuting patterns of 19th century domestic workers to the evolution of major and minor league baseball parks. They are also extremely valuable for studying the impact on the environment of past uses of buildings on or adjacent to a specific location."

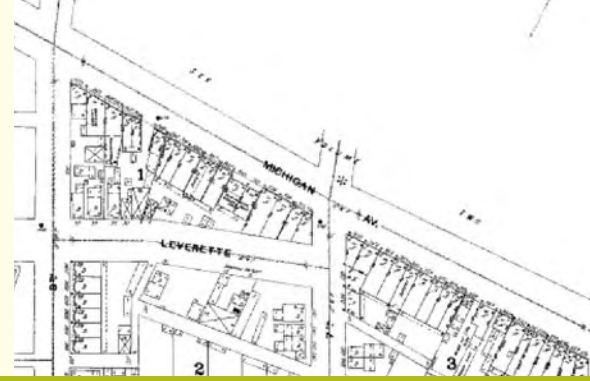
Now this vital American resource is available online, with enhanced images and indexing that makes it easy for genealogists and academic researchers alike to study the maps in depth.

"THE MOST DETAILED GRAPHIC RECORD OF THE GROWTH OF URBAN AMERICA"

Library of Congress Founded in 1867 by D. A. Sanborn, the Sanborn Map Company was the primary American publisher of fire maps for over 100 years, repeatedly mapping towns and cities as they changed. ■ The maps provide a wealth of information, such as building outline, size and shape, construction materials, height, building use, windows and doors, street and sidewalk widths, boundaries, house numbers, and more. The plans often include information and shading for steel beams or reinforced walls, plus symbols for stables, garages, warehouses, etc. ■ Factories are labeled with the owner's name, as well as the products manufactured there. In large industrial and commercial buildings, even individual rooms and their uses are recorded.

Also depicted are pipelines, railroads, wells, water mains, dumps, and heavy machinery likely to affect the property's vulnerability to earthquake, fire, and flood. ■ The Sanborn maps provide an unparalleled picture of life in American towns and cities—especially when combined with the other resources that make up ProQuest Genealogy Center.





"THE NAVIGATION TOOLS WERE ESPECIALLY HELPFUL IN SEARCHING FOR HISTORICAL DATA IN THE SANBORN IMAGES...I WAS EASILY ABLE TO LOCATE POSITIONS. I HAVE COMPARED THE DATA WITH MY EXPERIENCE AT THE LIBRARY OF CONGRESS AND FIND IT VERY COMPLETE."

—STEVEN BRANTING, CONSULTANT, LEWISTON, ID

ENDLESS APPLICATIONS Sanborn fire insurance maps helped author Erik Larson recreate the lost Galveston of 1900 in *Isaac's Storm*. They helped San Franciscans rebuild their city after 1906 on foundations more resistant to fire and quake. And they've helped generations of users study the lessons of the past. ■ These are just a few of the collection's many uses:

- Genealogists and local historians can pinpoint buildings and neighborhoods
- Architectural historians can study construction materials and methods
- Urban planners can draw on past experience in designing the future
- Historians and geographers can trace the relative development of urban areas within or across regions
- Demographers can chart population shifts
- Transportation researchers can study road, rail, and water connections

Digital Sanborn Maps also serve another audience, just as important—the intellectually curious, so intrigued by this fascinating record and its new ease of use that they pursue self-directed research with it.

INTEGRATED INTERFACE MAKES RESEARCH EASY The original Chadwyck-Healey™ Sanborn Fire Insurance Maps collection on microfilm has long been one of the few comprehensive sets for the

entire U.S., with some 660,000 maps. We've enhanced and digitized the same maps for inclusion in the Digital Sanborn Maps collection. ■ It's easy to find the locations you want. Initially accessible by state and community, the maps also pinpoint the streets, landmarks, and other places noted in the map's index. Once displayed, the maps can be manipulated, expanded, printed, and downloaded.

OPTIONS FOR EVERY LIBRARY

There's sure to be a Sanborn Digital Maps package suited to your needs. Select individual states or the entire U.S. collection, in your choice of subscription or permanent access. ■ Your sales representative will be happy to help you design a package that's right for you.

PROQUEST GENEALOGY CENTER

Besides Digital Sanborn Maps, ProQuest Genealogy Center includes these online offerings:

- HeritageQuest Online™, with U.S. federal census records, family and local histories, directories, church records, tax lists, Periodical Source Index, Revolutionary War pension applications, Freedman's Bank Records, and more
- Ancestry® Library Edition, your source for over 4 billion names, with the U.K. census

- from 1861–1901; passenger indexes; vital records; Social Security Death Index; World War I draft registrations; maps; major reference books; and more
- ProQuest Historical Newspapers™, the digital archives of 10 leading U.S. newspapers in full page image, dating back to 1764

Genealogy resources in UMI® microform, CD-ROM format, and library-quality print include:

- HeritageQuest Census and Vital Records
- Microform Research Collections—including Genealogy & Local History
- Materials on the American Revolution, non-population U.S. census data, and more
- Primary resources and serials from the "Old Country," around the globe and across the centuries

Add the ST200 microform viewer-scanner to your library's computers for the ultimate genealogy research workstation, combining your online resources with the ability to digitize microform on demand.

TO LEARN MORE For more information on Digital San-born Maps, call your sales representative at 800-521-0600 or 761-4700, ext. 3344, or visit our website at www.il.proquest.com.

For copyright reasons, we are permitted to sell this product only to public and academic libraries. Sanborn® and Sanborn Maps® are registered trademarks of EDR. All rights reserved.